



Smart Asset Management and Inventory System by VHB

How are you managing your assets?



Municipalities face many challenges, but few are as important as where to spend the next infrastructure dollar. Understanding asset inventory and maintenance is step one—asset management is next.

VHB's new web-based asset management platform is named SAM IS™ (Smart Asset Management and Inventory System). SAM IS™ links your asset inventory to maintenance and preservation tools, helping you make better asset-based decisions.

We used our experience with and understanding of municipalities' needs to build a smart and intuitive tool for the daily management of assets. The result is an easily implementable, end-to-end asset management system—one powerful enough to provide practical analysis and robust enough to cover multiple asset types.

The SAM IS™ platform is scalable, flexible, effective, and helpful. Together, these characteristics form an asset management tool that will help you inventory, plan, and maintain your community's assets.

Available whenever and wherever you need it, SAM IS™ uses Esri's ArcGIS Online to leverage existing municipal data layers. We also built SAM IS™ with your workflow and budget in mind. Because it's a modular-based program, you have the flexibility to only purchase the components you'll use.

What does SAM IS™ cover?

Asset management is the efficient and effective maintenance of physical infrastructure components such as pavement, sidewalks, signage, and more. SAM IS™ goes beyond the collection and analysis of an asset's location and condition. It's designed to help answer questions and identify solutions related to:

- » Stormwater resources, MS4 compliance
- » ADA sidewalk compliance
- » Deferred maintenance and repairs impacts
- » Maintenance of above- and underground utilities
- » Healthy community initiatives
- » Public safety and illumination
- » Energy consumption data and usage mapping
- » Prioritization of where and how to spend available resources to maximize available funding



Combining VHB's reliable, responsive service and expansive, multidisciplinary knowledge with a powerful tool like SAM IS™ provides an all-in-one option for municipalities. The result: peace of mind that your community's infrastructure needs are being fully addressed.

What can SAM IS™ do?



Inventory



Maintenance



Analysis

- » Help you proactively prepare for the future and manage existing conditions, while documenting and accessing the history of your assets
- » Input and evaluate your asset inventory and current conditions to benefit the budgeting and decision-making process
- » Generate reports in your own specific format, giving you easy-to-interpret results that facilitate faster response times in emergency or maintenance situations, saving your municipality time and money
- » Help you understand and connect to your data by pulling the necessary information at the right time, without flooding your computer screen with links or cluttering your desk with hardcopy files
- » Transform the data you collect into knowledge you can share through user-friendly, customizable dashboards and reports

How does it work?

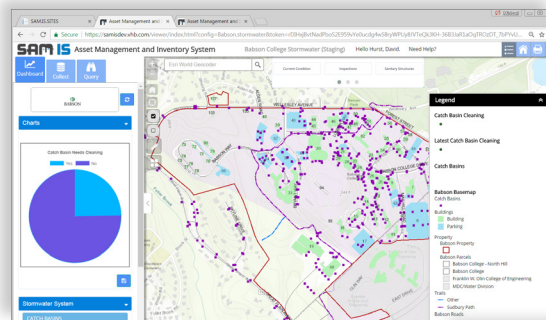
SAM IS™ can help you view, identify, forecast, plan, and maintain various types of assets.

With its robust capabilities, SAM IS™ offers municipalities a streamlined solution to enhance asset decision-making and monitoring. Your employees can update information, as well as input maintenance and repair records directly to the database.

Schedule a demonstration

to see how we can help your municipality with asset management.

www.samisbyvhb.com



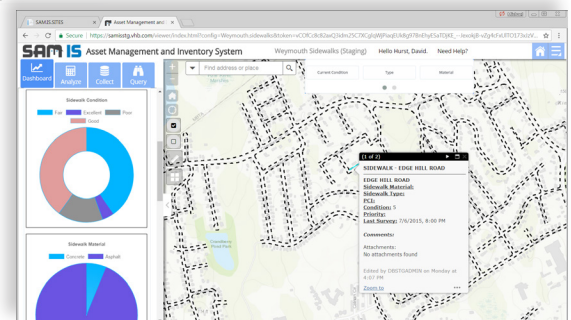
Information at your fingertips.

The asset management solution helps display any asset conditions, both spatially and within a customizable dashboard.

▶ *SAM IS™ Stormwater module helps municipalities with catch basin maintenance*

What does the future hold?

Prioritize what actions are needed and apply the appropriate resources to an issue before it causes disruption. Use the information in financial planning and budgeting. Help limit the impact of emergencies by staying ahead of maintenance needs and inspections.



▶ *SAM IS™ Sidewalk module with ADA compliance methodology*