



Smart Asset Management and Inventory System by VHB

Are you maximizing the lifespan of your pavement?

Pavement conditions can change over time due to weather, traffic, and other factors. VHB's SAM IS® Pavement module can help municipalities to understand current conditions, and to forecast needs, priorities, and lifecycle costs.

Studies have shown that well-maintained municipal roadways greatly benefit a community. Roads with a high average Pavement Condition Index (PCI) are less expensive to maintain, resulting in a lower overall tax burden in the long term. Smoother roads also benefit residents with lower vehicle repair and maintenance costs.

The SAM IS Pavement module provides municipalities with a valuable, comprehensive tool to help them plan ahead and achieve goals for their road networks. SAM IS permits cataloging of roads and their attributes, including the existing survey condition. The platform also helps with determining the backlog of work needed on each road, as well as to properly forecast budgets. The module can track actions taken on pavement over time, providing a historic snapshot of how roadway have changed and improved.

Meanwhile, the configurable SAM IS reporting function provides the flexibility to generate reports and enhance the ability to communicate about pavement conditions and needs. It provides municipalities with quantifiable, scientific data that can be used to justify the benefits of increasing their pavement budgets. Building on VHB's 30 years of experience using RoadManager GPMS™, the SAM IS Pavement module also offers the ability to overlay other existing GIS data—such as parcels, utilities, and other project mapping—to help coordinate pavement work with additional infrastructure projects.



VHB's Smart Asset Management and Inventory System—SAM IS—incorporates features developed to help municipalities inventory, plan, and budget for needed public works programs, including pavement management, stormwater systems, sidewalks, signage, and other municipal assets.



Combining VHB's reliable, responsive service and expansive, multidisciplinary knowledge with a powerful platform like SAM IS provides an all-in-one option for municipalities. The result: peace of mind that a community's pavement needs are being fully addressed.



Inventory



Analysis



Maintenance

How the SAM IS platform can help

- » Input and evaluate roadway inventory and current pavement conditions to benefit the budgeting and decision-making process
- » Generate reports in a specific format, providing easy-to-interpret results that facilitate faster response times in emergency or maintenance situations, saving municipality time and money
- » Help understand and connect to data by pulling the necessary information at the right time, without flooding computer screens with links or cluttering desks with hardcopy files
- » Transform the data collected into knowledge that can be shared through user-friendly, customizable dashboards and reports
- » Help proactively prepare for the future and manage existing conditions, while documenting and accessing the history of pavement in the community

Working with SAM IS

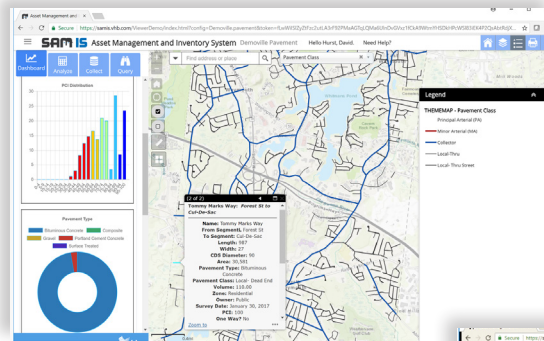
With its robust capabilities, the SAM IS platform offers municipalities a streamlined solution to understand and forecast pavement needs, priorities, and lifecycle costs. Your employees can update information, as well as input maintenance and repair records directly to the database.

SAM IS modules can help you view, identify, forecast, plan, and maintain pavement in your community.

Schedule a demonstration

to see how we can help your municipality manage its pavement effectively.

www.samisbyvhb.com



Information at your fingertips.

The system helps display pavement conditions, both spatially and within a customizable dashboard. Pavement data collected in the field is accessible for review and data management.

What does the future hold?

Prioritize what actions are needed and apply the appropriate resources to an issue before it causes disruption. Use the information in financial planning and budgeting. Help limit the impact of emergencies by staying ahead of maintenance needs and inspections.

