



How are you **managing your assets?**

Municipalities face many challenges, but few are as important as where to spend the next infrastructure dollar. Understanding the inventory and assets maintained is step one. Managing those assets is the next step.

SAM IS ...Responsive ...Smart ...Intuitive

VHB's new web-based asset management platform is named SAM IS™ (Smart Asset Management and Inventory System). SAM IS™ can connect your asset inventory to the maintenance and preservation of those assets to help you make better asset-based decisions.

We used our experience and understanding of the needs of municipalities to build a smart and intuitive tool for the daily management of assets. The result is an easily implementable, end-to-end asset management tool for our municipal partners, powerful enough to provide useful analysis and robust enough to cover multiple asset types.

The SAM IS™ platform is scalable, flexible, effective, and helpful—these characteristics together form an asset management tool that will help your organization inventory, plan, and maintain your assets.

Available whenever and wherever you need it, SAM IS™ uses Esri's ArcGIS Online to leverage existing municipal data layers. We built SAM IS™ with your work flow and budget in mind and made it a modular-based program, so you're only buying what you need when you need it.

What does SAM IS™ cover?

Asset management is the efficient and effective maintenance of all types of assets, such as pavement, sidewalk, and signage. SAM IS™ is more than just the collection and analysis of the physical infrastructure asset's location and condition. It's designed to help answer questions and identify solutions:

- » Stormwater resources MS4 compliance
- » ADA sidewalk compliance
- » Deferred maintenance & repairs impacts
- » Maintenance of above- & underground utilities
- » Healthy community initiatives
- » Public safety & illumination
- » Link to energy consumption data to map usage
- » Prioritize where & how to spend available resources to maximize impact from available funding



How are you managing your assets?

Combining VHB's knowledge working across multiple service lines with a powerful tool like SAM IS™—supplemented with VHB's reliable and responsive client service—provides an all-in-one option for municipalities. The result: peace of mind that your infrastructure needs are being fully addressed for your community.

What can SAM IS™ do?

SAM IS



Inventory



Maintenance



Analysis

- » Help you proactively prepare for the future and manage existing conditions while documenting and accessing the history of your assets.
- » Input and evaluate your asset inventory and current conditions to benefit the budgeting and decision-making process.
- » Generate reports in your own specific format, giving you easy-to-interpret results facilitating faster response times to emergency or maintenance situations, saving your municipality time and money.
- » Help you understand and connect to your data by pulling the necessary information at the right time, without flooding your computer screen with links and without hardcopy files cluttering your desk.
- » Communicate and use the information, through user-friendly, customizable dashboards and reports to turn the data you collect into knowledge you can share.

How does it work?

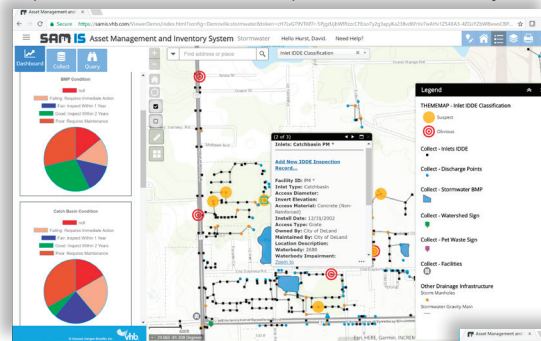
We can help you view, identify, forecast, plan, and maintain various types of assets within an organization. The only question is where to start!

Schedule a demonstration

to see how we can help your institution with asset management.

www.samisbyvhb.com

Based on our combined experience with asset management for government agencies and numerous university- and institution-based projects, SAM IS™ brings decision-making and monitoring capabilities to your municipality. Your employees can update information and input maintenance and repair records directly to the database.



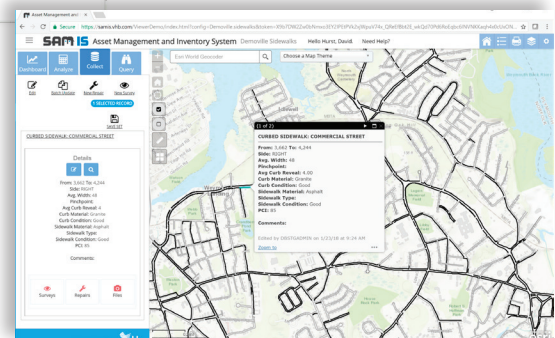
Information at your fingertips.

The asset management solution helps display any asset conditions both spatially and within a customizable dashboard.

◀ *SAM IS™ stormwater module helps municipalities with catch basin maintenance*

What does the future hold?

Prioritize what actions are needed and apply the appropriate resources to the issue before it causes disruption. Use the information in financial planning and budgeting. Help limit the disruptive impact of emergency responses by staying ahead of maintenance needs and inspections.



▶ *SAM IS™ sidewalk module with ADA compliance methodology*